

Public and Private Low-Income Housing List
Dauphin County

Baldwin Village
939-9301
Swatara Township
Handicapped

Dauphin County Housing Authority
939-9301
Steelton
Family, Elderly, Disabled, Handicapped

Rutherford Park (tax credit)
561-0615
Hummelstown
Family, Disabled, Handicapped

Middletown Interfaith Apartments
944-7634
Middletown
Elderly

Hummelstown Manor
566-8782
Hummelstown
Family, Disabled, Handicapped

Pheasant Hill Estates
657-3135
Harrisburg
Elderly, Disabled, Handicapped

Hershey Plaza
533-5182
Hershey
Elderly, Disabled, Handicapped

Eastridge Apartments (tax credit)
561-0364
Harrisburg
Family, Elderly, Disabled, Handicapped

Harvestview Apartments (tax credit)
362-3317, (570) 768-1128
Elizabethville
Family, Elderly, Handicapped (One Unit)

Boyer Memorial Apartments
(570) 584-4665
Hallifax
Elderly, Handicapped

Hollywood Court
(570) 649-5668
Elizabethville
Elderly, Handicapped, Disabled

New Song Village
561-7270
Harrisburg
Chronically Mentally Ill Adults

Felton Lofts (tax credit)
(717) 985-7056
Steelton
Family, Elderly, Disabled

General Information

Public housing is administered by city and county housing authorities. Priority is given to persons that either live or work in that county or city.

Public Section 8 vouchers also are administered by city and county housing authorities. Eligible households are required to pay no more than 30% of their yearly income for housing. The difference between the tenant's payment and the actual rent is paid by the housing authority. If you receive a Section 8 voucher, you may seek other suitable housing or remain in your present housing situation. The dwelling must meet HQS (housing quality standards) safety and sanitary code standards and the landlord must agree to participate in the Section 8 program.

- Other factors that may affect your application favorably:
1. Where do you currently live?
 2. Are you a veteran?
 3. Are you currently employed?
 4. Are you a graduate of a transitional housing program?
 5. Are you a victim of domestic violence?

Private housing Section 8 vouchers are administered by each individual housing complex. To determine income eligibility, individual tenants should contact the specific complex.

Some housing units are available on a **priority or preference basis**. If the circumstances apply, advise the interviewer that you are (1) paying more than 50% of the household income for rent, (2) homeless or living in substandard housing—no heat, no hot or cold running water, no electricity, no commode, no tub, (3) involuntarily displaced due to fire or flood, government condemnation, or victim of domestic violence.

Rental rates in tax credit housing are generally lower than market rates for a comparable unit, but not as low as a Section 8 or public housing unit. Typically, the tax credit rental rates are based on 50% to 60% of the area median income. The rent will not change if your income changes.

Online Links

www.hud.gov/topics/rental_assistance/phprog

www.hud.gov/topics/housing_choice_voucher_program_section_8

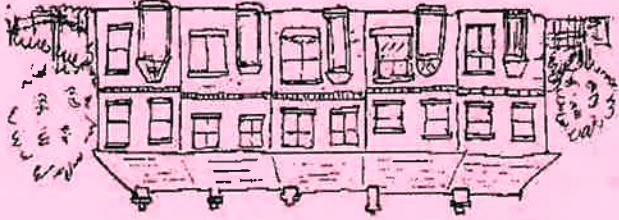
Fair Housing Laws

Federal, state, and local housing laws cover the rental of housing and specifically prohibit discrimination based on a person's race, color, national origin, religion, sex, family status, and/or handicap or disability. The City of Harrisburg Human Relations ordinance adds additional provisions that include age, place of birth, marital status, and sexual preference/orientation. The laws make it illegal to discriminate by doing any of the following:

1. Refuse rental
2. Change terms, conditions, and/or privileges of rental
3. Refuse to show available dwelling
4. Make, print, or publish any notice, statement, or advertisement indicating a preference or limitation with respect to rental

If you suspect that you have been a victim of housing discrimination at the Pennsylvania Human Relations Commission at (717) 787-9780 or go to the Web site at www.phrc.state.pa.us.

**A Guide to
Low-Income Rental Opportunities in
Cumberland, Dauphin, Lebanon, Lebanon, Perry, and
Northern York Counties**



Harrisburg Center for Peace and Justice
315 Peffer Street
Harrisburg, PA 17102

Palmyra Interfaith Manor
838-5267
Palmyra
Elderly, Disabled

Washington Court Apartments
866-2182
Myerstown
Family, Elderly

Deer Lake Apartments (tax credit)
274-3210
Lebanon
Family

Walnut Manor
865-7345 or (570) 768-1128
Jonestown
Family, Disabled, Handicapped

Tuphocken Terrace
866-2077
Myerstown
Elderly

Markethouse Place (tax credit)
273-1639
Lebanon
Elderly

Lebanon Village Apartments
272-9889
Lebanon
Family, Disabled

City of York Housing Authority
845-2601
York
Family, Elderly, Disabled

Dillsburg Heights
432-4457
Dillsburg
Family, Elderly, Disabled

Green Meadow Apartments
432-2556
Dillsburg
Elderly, Disabled

Westminster Place at Carroll Village
432-1670
Dillsburg
Elderly, Disabled

Highland Park (tax credit)
(717) 432-4700
Dillsburg
Family

About the information in this Brochure
Every effort has been made to gather complete and accurate information about rental opportunities. The information provided about particular rental properties was supplied by the contact person or management company responsible for the property. For more information on fair housing laws, public housing, and privately-owned subsidized housing, contact:
The Harrisburg Center for Peace and Justice
315 Peffer Street
Harrisburg, PA 17102
Phone: (717) 233-3022
Fax: (717) 232-3281
February 2020

Willow Ridge Apartments (tax credit)
520-9593
Hershey
Family, Disabled

Springwood Glen Apartments (tax credit)
939-8026

Middletown
Family, Disabled, Handicapped

Greenfield Estates (tax credit)
362-2034
Elizabethville
Family, Handicapped

Fairview Estates (tax credit)
896-2755
Family, Handicapped

Haltax
Family, Handicapped

Hillside Heights (tax credit)
692-3207; (800) 735-3068
Millersburg
Family, Handicapped

Valley View Terrace Apartments
896-2862
Haltax
Family, Handicapped

Woodlawn Court Apartments (tax credit)
944-3540
Middletown
Family, Disabled

Polk Apartments
692-2613
Millersburg
Elderly

Union House
453-4286
Lykens
General Occupancy and Physically Disabled

Rattling Creek
939-9301
Lykens
Family, Handicapped

Minnich Terrace
939-9301
Lykens
Elderly, Handicapped

Margaret Morre Apartments
692-749
Millersburg
Elderly

Creekside Village
561-7270
Harrisburg/Lingestown
Chronically Mentally Ill Adults

Sunflower Fields (tax credit)
717-810-1900 Harrisburg
Family

Harrisburg City
Harrisburg Housing Authority
232-6781
Harrisburg
Family, Elderly, Disabled, Handicapped

Governor Square Apartments (tax credit)
238-1553
Middletown
Family, Elderly, Disabled, Handicapped

Linden Terrace
232-4454
Harrisburg
Family, Elderly, Disabled

Edison Village
232-0564
Harrisburg
Elderly, Disabled, Handicapped

Presbyterian Apartments
233-5114
Harrisburg
Family, Elderly, Disabled, Handicapped

Market Court (tax credit)
236-4744
Harrisburg
Family, Handicapped

Mr. Pleasant Apartments (tax credit)
238-0470
Harrisburg
Family, Disabled

Harrisburg Park Apartments
236-5184
Harrisburg
Family, Disabled

B'Nai B'rith Apartments (tax credit)
232-7516
Harrisburg
Elderly, Disabled

Ivey Lane
232-7438
Harrisburg
Family, Elderly, Disabled

Laurel Towers
233-1340
Harrisburg
Family, Handicapped

The Court at Washington Square (tax credit)
233-7755
Harrisburg
Elderly, Handicapped (Mobility Impaired Only)

The Residence at Alison Hill (tax credit)
236-4744
Harrisburg
Family, Elderly, Disabled

The McFarland (tax credit)
236-4744
Harrisburg
Family

Cumberland Court (tax credit)
(717) 695-4209
Harrisburg
Family, Handicapped

Paxton Place (tax credit)
(717) 810-1900
Harrisburg
Elderly

Regents Lofts Apartments (tax credit)
(717) 236-5005
regents.lofts@myg.com
Harrisburg
Family, Elderly, Disabled, Handicapped

Cumberland County
249-1315
Family, Disabled

Susquehanna View Apartments
763-1184
Camp Hill
Elderly, Disabled

Bethany Towers
766-7698
Mechanicsburg
Elderly, Disabled

Shepherd's Crossing
249-0789
Mechanicsburg
Elderly, Family, Disabled

Orchard Apartments
763-0937
Camp Hill
Family, Handicapped

Mallard Run Apartments
761-5414
Camp Hill
Elderly, Disabled

Boiling Springs Apartments
258-8387
Boiling Springs
Family, Handicapped

Episcopal Square Apartments
530-1277
Shippensburg
Elderly

Iroquois Hotel
774-4500
New Cumberland
Elderly, Handicapped (Two Units)

Pine Ridge Apartments
486-4063
Mt. Holly Spngs
Family, Elderly, Disabled

One West Penn Apartments
249-7797
Carlisle
Elderly

Round House View Apartments (tax credit)
732-0622
Enola
Elderly

American House Apartments (tax credit)
249-0789
Mechanicsburg
Elderly, Disabled, Handicapped

Brethren House Apartments (tax credit)
249-0789
Mechanicsburg
Family, Elderly, Disabled, Handicapped

Crossroad Apartments
635-9780
Lower Allen Township
Family

Perry County
Perry County Rental Assistance Program
582-8853
New Bloomfield
Family, Elderly, Disabled, Handicapped

Locust Village Apartments
957-4830
Marysville
Elderly

Perry Manor
567-9769
Newport
Family

Pine Street Commons (tax credit)
444-7563; (570) 649-5868, or (800) 735-3068
Liverpool
Elderly, Disabled

Lebanon County Housing Authority
274-1401
Lebanon
Family, Elderly, Disabled, Handicapped

Poplar Terrace
273-3333
Lebanon
Elderly, Disabled, Handicapped

Willow Terrace
273-7071
Lebanon
Elderly

Brookside Apartments
273-4566
Lebanon
Family, Elderly

Highland Glen Apartments
272-2103
Lebanon
Family, Disabled, Handicapped